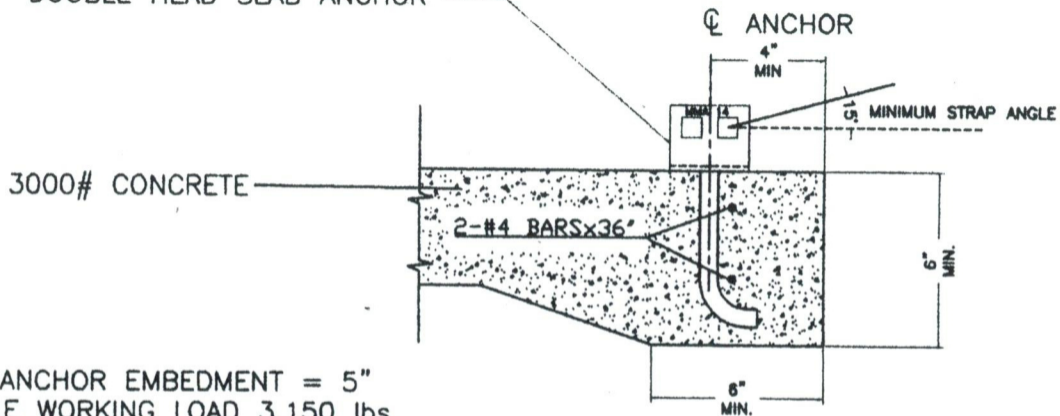


DOUBLE HEAD SLAB ANCHOR



NOTES:

1. MINIMUM ANCHOR EMBEDMENT = 5"
2. ALLOWABLE WORKING LOAD 3,150 lbs.  
WILL WITHSTAND A 50% OVERLOAD  
(4,725 lbs. TOTAL)
3. MINIMUM SLAB AREA PER ANCHOR:  
6" SLAB = 65 S.F.  
8" SLAB = 48 S.F.
4. MARK MMA-14